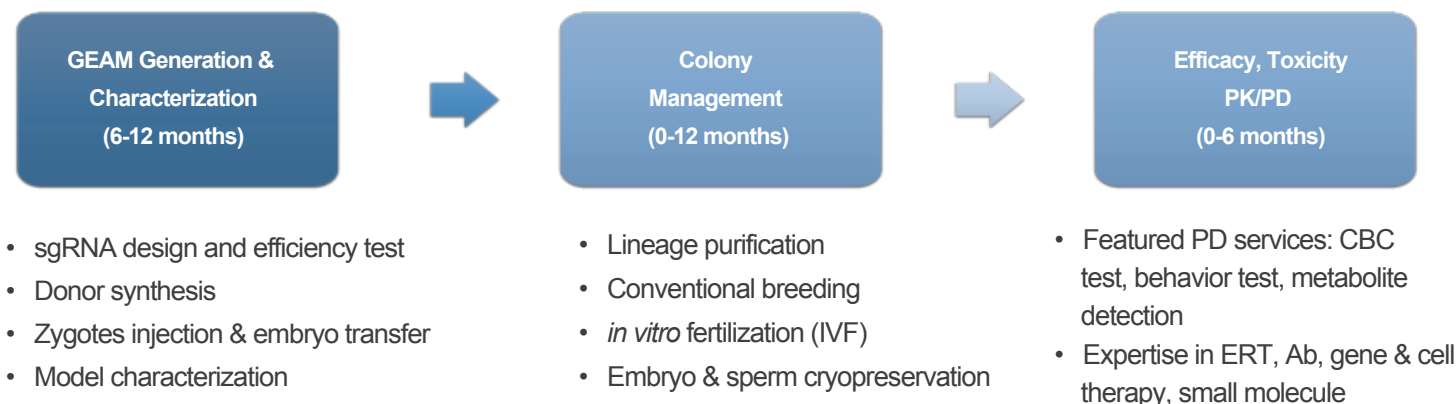


## Rare genetic disease platform

- From the generation and characterization of genetically engineered animal model (GEAM) to colony management and pre-clinical pharmacology research
- A wide range of diseases, including hematologic, metabolic, neurologic and immunologic diseases

### From GEAM generation to pharmacology



### In-house collection of GEAMs in KO/KI mouse & rat



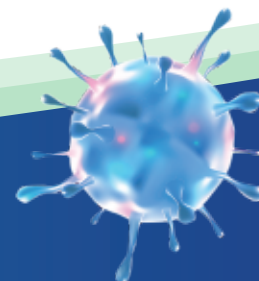
### Behavioral assessment platform



**Contact us**

Technical: OIU-BD-Translation@wuxiapptec.com  
 BD USA: declan.ryan@wuxiapptec.com  
 BD EU/UK/Israel: dave\_madge@wuxiapptec.com

BD China: xu\_longji@wuxiapptec.com  
 BD Japan: fumio\_ito@wuxiapptec.com  
 BD Korea: sycho@wuxiapptec.com



## Equipment for embryonic operation and *in vitro* testing



**Stereoscopic Microscope**  
embryonic operation



**Microscopic Operating System**  
Microinjection & embryonic operation



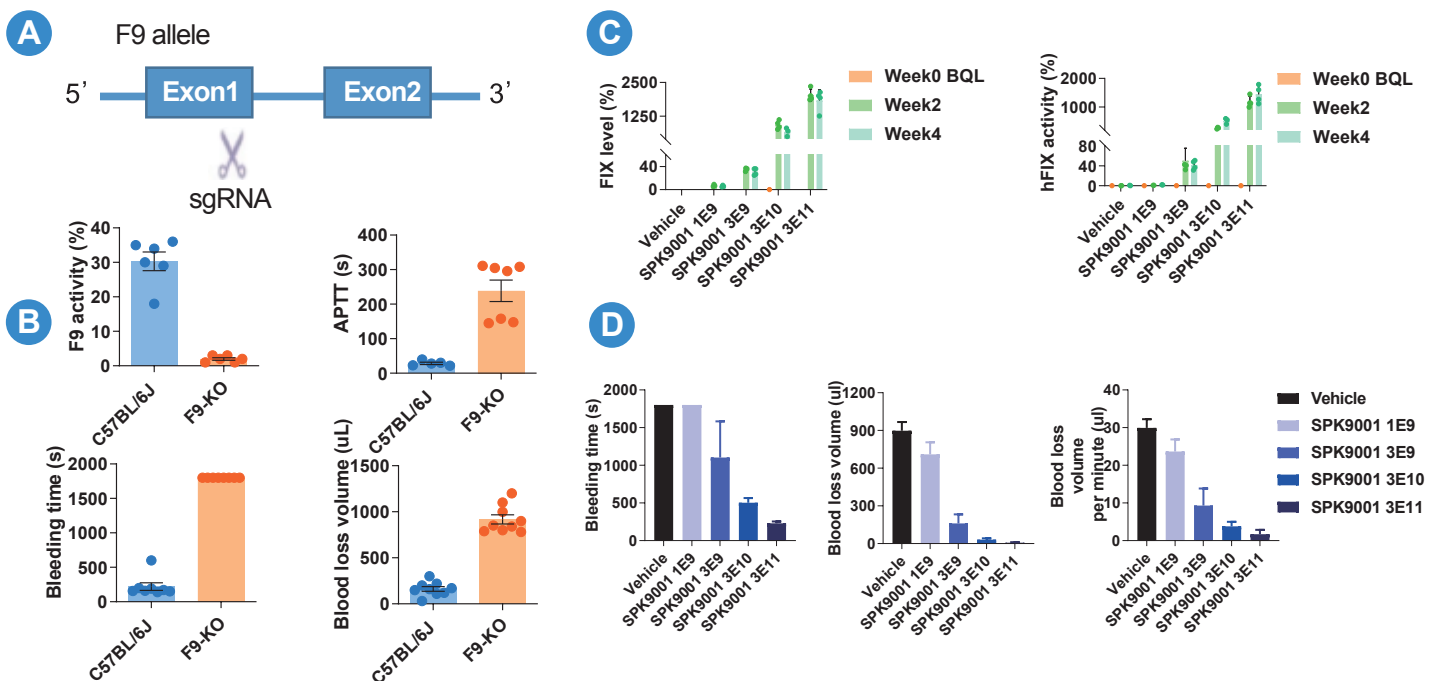
**Bio-Rad Gene Pulser Xcell**  
Nucleotides, DNA and RNA  
electro-transfer

**1300 MESO® QuickPlex SQ120**  
Multifactorial detection



**Animal Five-category  
Hematology Analyzer**  
Hemanalysis in animal blood

## Case study: gene therapy in F9-KO hemophilia B model



F9-KO Haemophilia B murine model generation, characterization and validation. (A) Construction strategy of F9-KO mouse model. (B) Decreased plasma F9 activity, increased APTT, and impaired hemostasis in F9-KO mice. (C-D) Reversed phenotypes in F9-KO mice after AAV-F9 treatment, increased F9 level and activity (C), and improved hemostasis (D).