

# Immune profiling platform

- Cutting-edge technologies and assay development
- Efficient project management
- Experienced highly experienced team
- Expedite the discovery and development of novel therapeutics

## Flow Cytometry



Cytek Aurora (40 colors)  
BD LSR Fortessa (18 colors)  
BD LSR Fortessa X20 (18 colors)  
BD Canto plus (10 colors)  
BD Canto II (8 colors)  
BD FACS Aria II (18 colors)  
Intellicyt iQue3

- Tumor infiltrating lymphocyte (TIL) analysis
- Immune checkpoint analysis
- T cell activation and proliferation
- PhosphoFlow

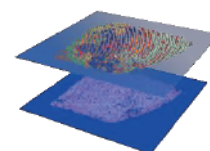
## scRNA seq



10X Genomics  
Chromium

- Cell Type Identification
- Drug target identification
- Drug response profiling
- Disease modeling

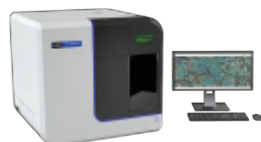
## Spatial Transcriptomics



10X Genomics

- Mapping gene expression patterns
- Mapping the immune landscape
- Identifying immune cell interactions

## Multiplex IF



Akoya Polaris  
HALO

- Tumor microenvironment analysis
- Area quantification
- Immune cell scoring
- Immune cell interaction
- Biomarker analysis

## NanoString



nCounter PrepStation  
nCounter Digital Analyzer

- Gene expression profiling
- Biomarker discovery
- Target identification
- Mechanism of action studies
- Time series analysis

## Cytokine Profiling



MSD SQ120  
Luminex 200  
Olink Q100  
ELISA  
FCM-based CBA

- Immune activation monitoring
- Immune cell function analysis
- Biomarker identification

## Broad application



### Target discovery and validation

Help identify and validate drug targets by measuring the expression levels of immune-related genes and proteins in relevant biological pathways or networks.



### Assessing drug efficacy

Assess the efficacy of drugs by measuring changes in the immune system or microenvironment following treatment.



### Action mechanism

Identify potential mechanisms of action of drugs and guide the development of combination therapies.



### Biomarker discovery

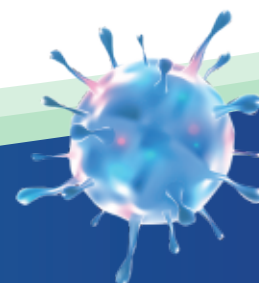
Identify biomarkers that are predictive of drug response or disease progression. Support patient stratification for clinical trials and guide the development of new therapies.



### Contact us

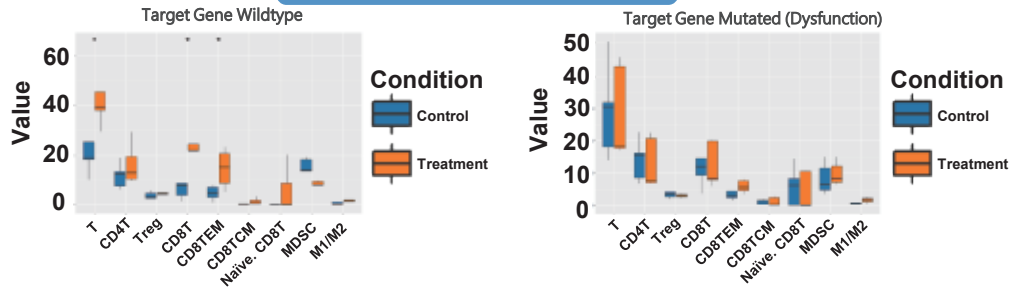
Technical: OIU-BD-Translation@wuxiapptec.com  
BD USA: declan.ryan@wuxiapptec.com  
BD EU/UK/Israel: dave\_madge@wuxiapptec.com

BD China: xu\_longji@wuxiapptec.com  
BD Japan: fumio\_ito@wuxiapptec.com  
BD Korea: sycho@wuxiapptec.com

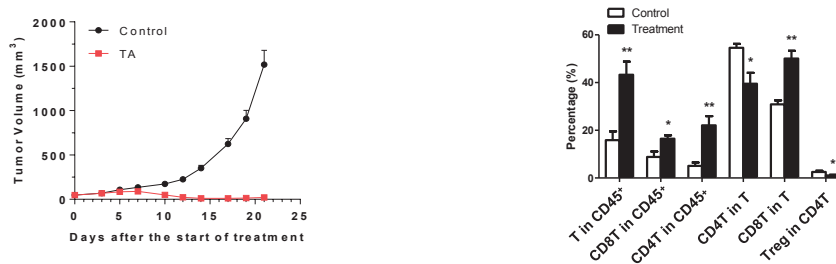


## Case study: immunology services

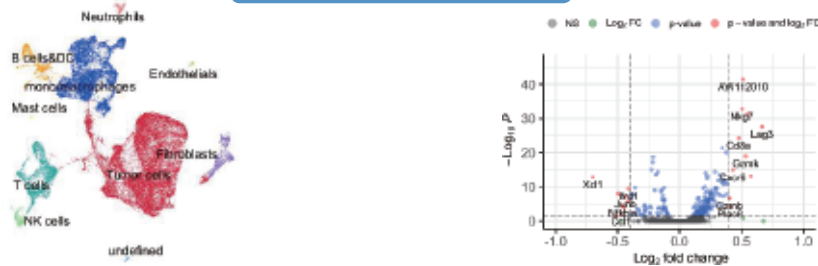
### Target discovery and validation



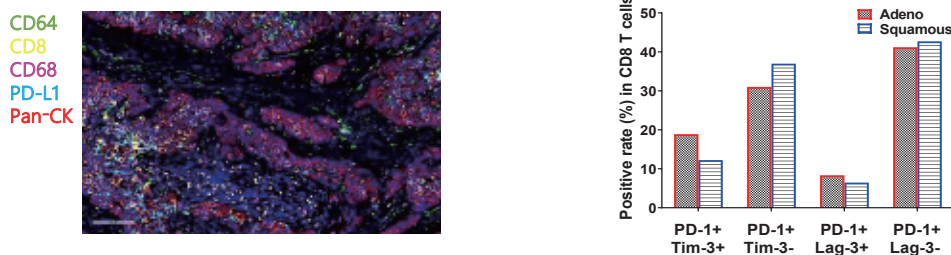
### PD studies



### Mechanism of action



### Biomarker discovery



- Cutting-edge technologies – utilizing multidisciplinary and advanced technologies for precise and in-depth immune profiling.
- End-to-end solution – from study design and sample processing, to data analysis, interpretation and reporting.
- Team excellence – highly trained and experienced team specialized in immune profiling research, with a proven track record of supporting successful drug discovery efforts
- Our platform has been extensively employed in different stages of drug discovery programs across a variety of therapeutic areas, including oncology, autoimmune diseases, and infectious diseases.