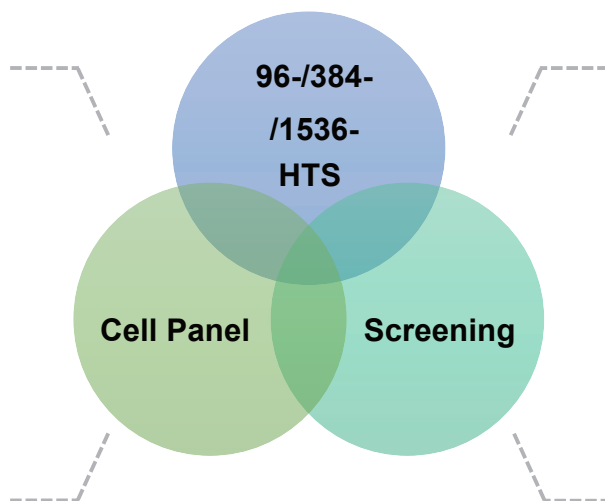


Cell panel screening

- Comprehensive, high-throughput, and cost-effective cell line screening services
- 600+ human cancer cell lines readily utilized for the single agent or combinatory drug screening
- 2D/3D culture system, spheroids or organoids, with the incubation options of conventional (3-7 days) and long-term (10-21 days)
- Integrated with downstream pharmacological services, with 320+ CDX models ready-for-use

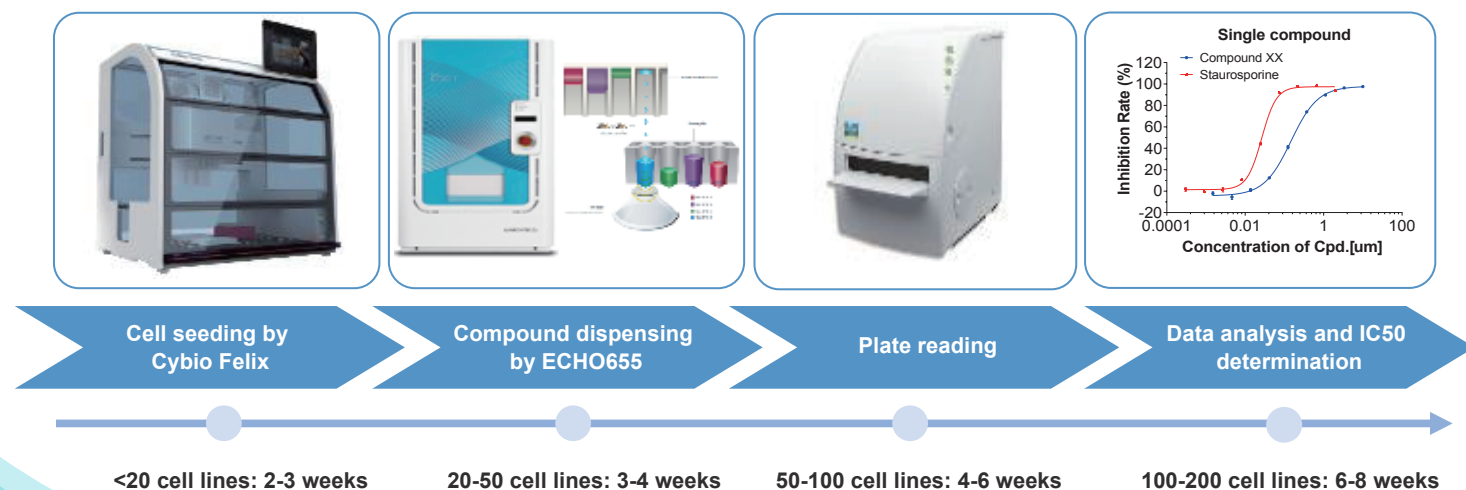
Tumor cell panel and screening

- 600+ human cancer cell lines, covering 30+ cancer types
- 100+ mouse cancer cell lines covering 20+ cancer types
- 95 PDX-derived cell lines
- 1,400+ PDX for primary tumor cell line isolation
- 150+ engineered cell lines
- 9 drug resistant cell lines
- Customized cell line generation services (Lentivirus OE, CRISPR KI/KO, etc.)



- **Viability/proliferation assay:** 2D & 3D CellTiter-Glo Cell Viability Assay, S3 Live Cell Analysis, BrdU ELISA, CyQUANT assay
- **Cell cycle & Apoptosis assay:** PI/BrdU FACS, Annexin V/Caspase 3 analysis with Incucyte S3
- **Phosphorylation cellular assay:** AlphaLISA Screening, HTRF Assay
- **Reporter assay:** NanoLuc system for Targeted Protein Degradation (TPD) screening, Other luciferase reporter assays

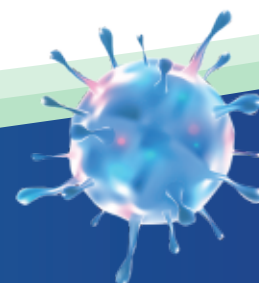
Flowchart of high-throughput screening platform



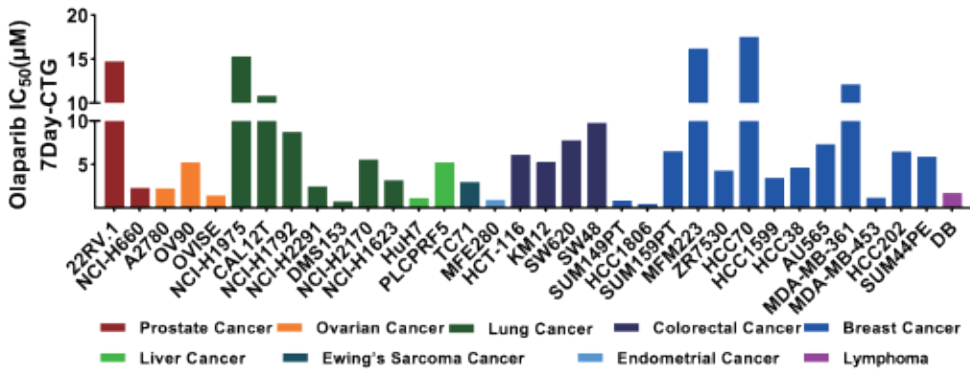
Contact us

Technical: OIU-BD-Translation@wuxiapptec.com
BD USA: declan.ryan@wuxiapptec.com
BD EU/UK/Israel: dave_madge@wuxiapptec.com

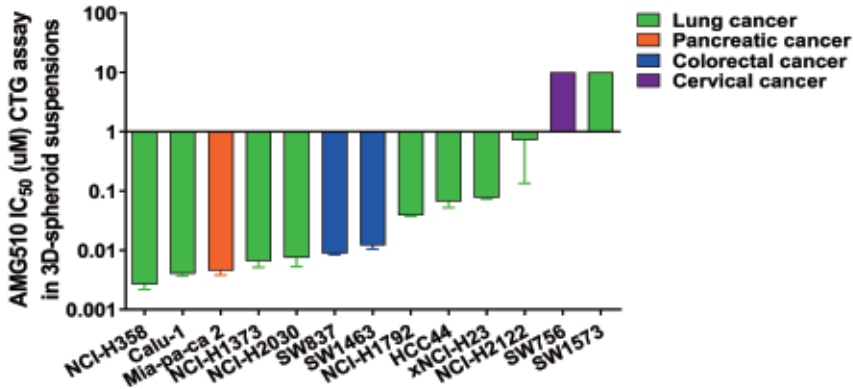
BD China: xu_longji@wuxiapptec.com
BD Japan: fumio_ito@wuxiapptec.com
BD Korea: sycho@wuxiapptec.com



Case study: cell panel screening



Responsiveness of selective KRAS inhibitor correlates with KRAS mutation (3D culture, genomic-specific panel)



Validation of EGFRi-resistant mutation by AlphaLISA screening (EGFR engineered cell lines)

