

## Autoimmune and inflammatory disease models

- Autoimmune and inflammatory diseases
  - Animal disease model
  - *in vitro* and *ex vivo* methodologies
- Multiple sclerosis, inflammation of respiratory diseases, inflammatory bowel disease, arthritis and systemic lupus erythematosus

### Covering more

### Diving deeper



#### One-stop service

Integrated services to provide **end-to-end** solutions for pre-clinical packages, enabling evaluation of *in vitro* / *in vivo* correlation and PK/PD efficacy correlation



#### Talents and skills

Dedicated team with **10+** years experience in immunology and IND-enabling studies



#### Diverse disease types

**40+** disease models covering a wide range of **indications** and **animal species** including **large animals and NHPs**, enabling a seamless translation into IND studies and beyond.



#### High-quality models

Stable disease models with excellent **reproducibility**, validated **by multiple end-points** and biomarkers to drive and accelerate the discovery and development of innovative drugs.

## Well-validated disease models in house

### Autoimmune disease models



- Alopecia areata
- Atopic dermatitis (AD)
- Delayed type hypersensitivity
- Experimental autoimmune encephalomyelitis
- Experimental sjögren's syndrome
- Rheumatoid arthritis
- Systemic lupus erythematosus
- Systemic sclerosis



### Inflammatory disease models



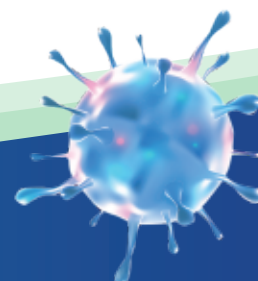
- Acute inflammation models
- Asthma
- Gout
- GvHD
- Inflammatory bowel diseases
- Pancreatitis
- Peritonitis
- Psoriasis
- Sepsis



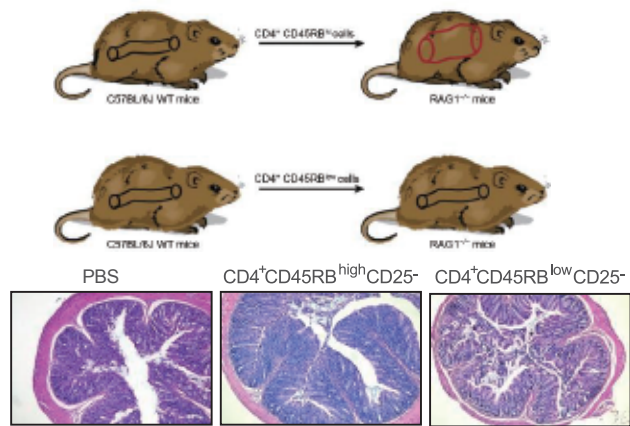
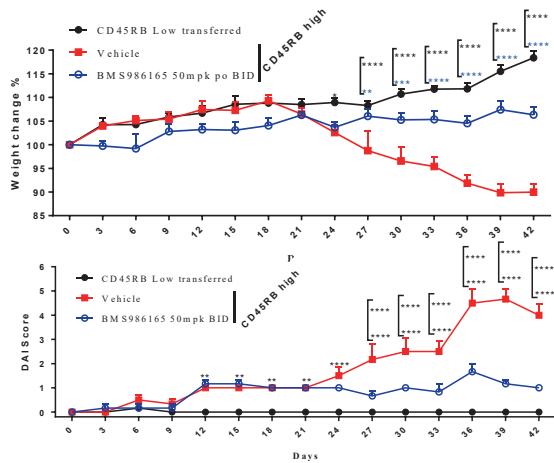
#### Contact us

Technical: OIU-BD-Translation@wuxiapptec.com  
 BD USA: declan.ryan@wuxiapptec.com  
 BD EU/UK/Israel: dave\_madge@wuxiapptec.com

BD China: xu\_longji@wuxiapptec.com  
 BD Japan: fumio\_ito@wuxiapptec.com  
 BD Korea: sycho@wuxiapptec.com

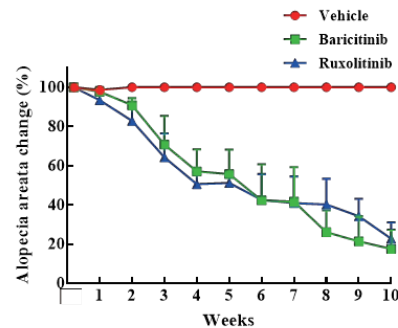
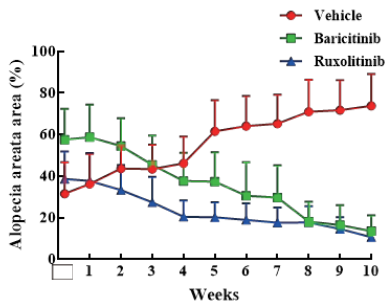


## Case study: T cell transfer-induced colitis model in SCID mice or RAG1-/- mice



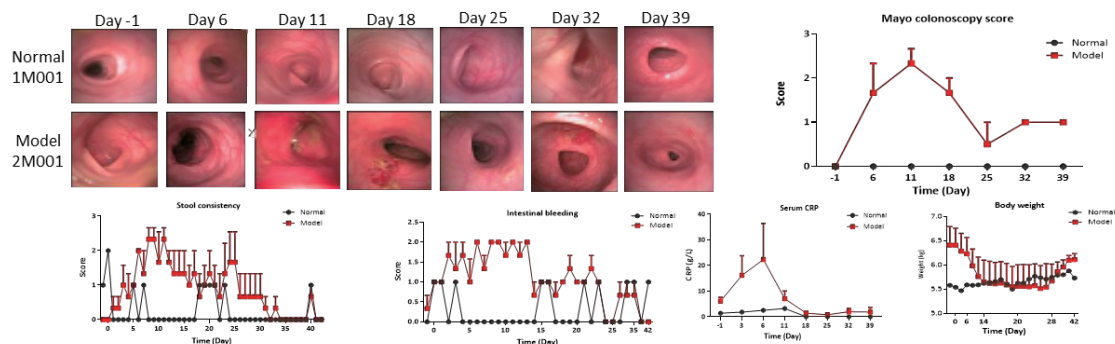
- Left: In-life assessments of T cell transfer-induced colitis in SCID mice.
- Right: Schematic diagram of T cell transfer-induced colitis in RAG1<sup>-/-</sup> mice and representative images of H&E staining for colon tissue.

## Case study: Alopecia areata model



- Left: In-life assessments (alopecia areata area and alopecia areata change) of full-thickness skin grafts-induced alopecia areata in C3H/HeJ Mice.
- Right: The representative image of alopecia areata area for full-thickness skin grafts in C3H/HeJ Mice.

## Case study: DSS-induced acute ulcerative colitis model in NHPs



- Top: The representative colonoscopic images and Mayo colonoscopy score.
- Bottom: Significant changes of stool consistency, intestinal bleeding, serum CRP, and body weight.