

A Better Start For Hit Discovery

For each family-i.e. kinases, DNA- and RNA- modifying enzymes, membrane proteins, etc.- gain access to our established systems, strategies and valuable experience that address even the most significant challenges of recombinant protein production.

Expertise in All Target Classes & Challenging Proteins

Covering All Target Classes and Disease Areas

- 01. Cancer and inflammation**
ATM, AMPK, NEK7, PI3K, ROR1, SRC, ULK1, WEE1...
- 02. Membrane Proteins**
Glucose transporter, P2X3, GPR40, CNR1, β2AR...
- 03. DNA Damage Response**
ATM, ATR/ATRIP, CHK1, CHK2, CDKs and cyclins ...
- 04. Neurodegeneration**
BACE1, PDE, NFE2L2, PTPN1, MAO-B, NTRK1, JNKs...
- 05. RNA/DNA Mod. Proteins**
Cas9, FEN1, EME1, DDX58, SND1, WRN, SMARCA...
- 06. Epigenetic Targets**
BRD2, BAZ1A, CREBBP, SIRTuins, HDACs, EHMT1...
- 07. Immune System**
cGAS, STING, IL1, ILRL1, MMPs, antibodies...

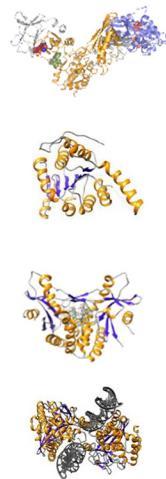
Over
1200
Proteins
Produced
to Clients
worldwide

1200
Assay Grade
Proteins
(verified for
biophysical methods)

>250
Crystallization
Grade Proteins
(verified crystallization
protocols)

Expertise in Challenging Proteins

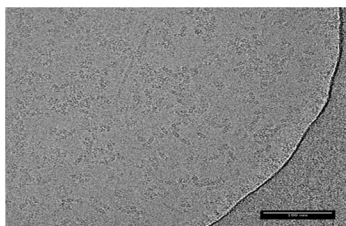
- 01. Protein Complexes**
AMPK – AMP activated protein kinase
- 01. DNA Modifying Proteins**
SMARCA2 – transcriptional regular / chromatin remodeling
- 02. Immune Therapy**
STING-stimulator of interferon genes
- 02. Rare Diseases**
cGAS-DNA sensor in the STING pathway
- 03. Membrane Proteins**
P2X3-ATP-gated ion channel, CNR1, GPR40, Glucose transporter...
- 03. RNA Modifying Proteins**
DDX58 – ATP-dependent RNA helicase



Protein
Catalog list

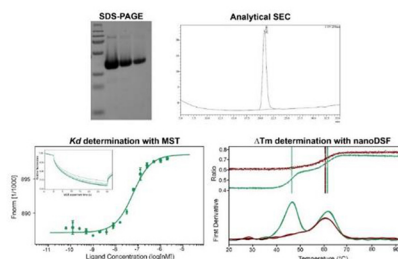
With Focus On Protein Quality And Stability

Cryo-EM images endorse excellent protein quality of 700 kDa dimeric soluble complex



CRELUX Cryo-EM Protein
HEK293 / multistep purification
Excellent particle distribution and density

Mass spectrometry and nanoDSF analyses guarantee the identity and proper folding of a protein



CRELUX Protein
E. coli / multistep purification



Hits Website



PHONE
US: +1 (857) 500-0235
China: +86 (021) 2066-3521



EMAIL
HitS_service@wuxiapptec.com



WuXi AppTec HitS US
Suite 111, 22 Strathmore Road Natick
MA 01760-2434, USA

Crelux GmbH, a WuXi AppTec Company
Am Klopferspitz 19a
82152 Martinsried, Germany

WuXi AppTec HitS China
240 Hedan Road, Shanghai 200131, China
1318 Wuzhong Avenue, Suzhou 215104, China

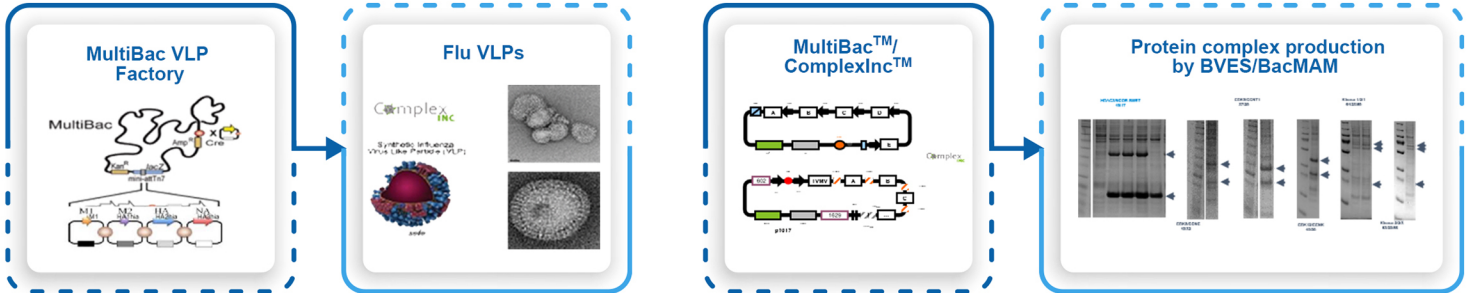
WuXi AppTec HitS
CRELUX

Enhanced Protein Expression Tools

Advanced co-expression vectors enable reliable production of protein complexes

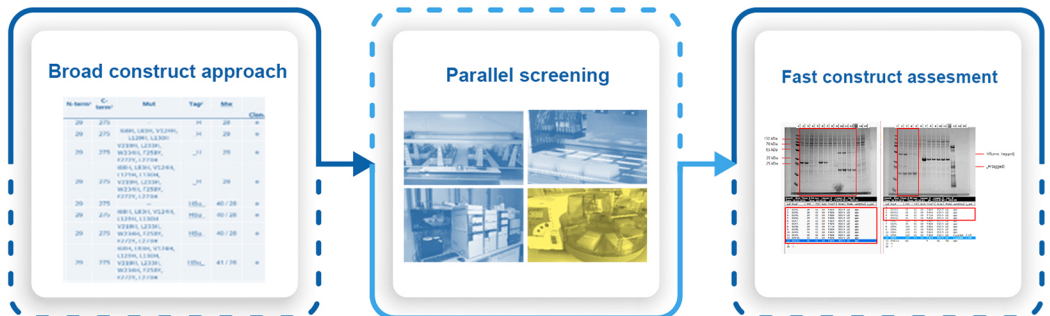
01. Insect cell co-expression of protein complexes

02. Mammalian / Insect cell co-expression of protein complexes

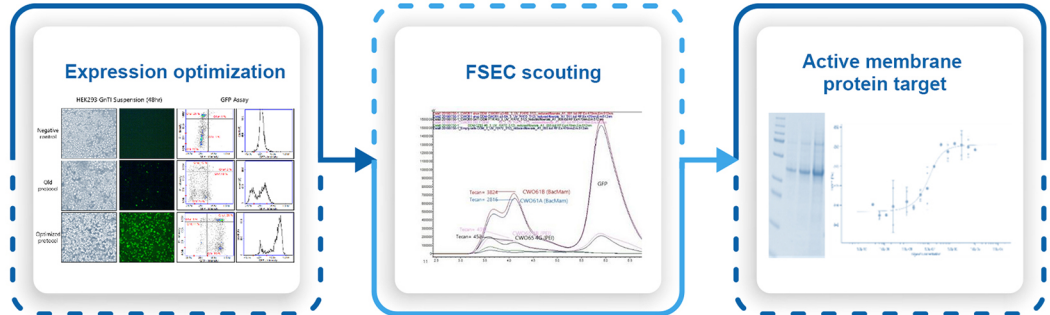


Fast-forward platforms for accelerated parameter optimization

01. host/ construct scouting parameter scouting / small scale production

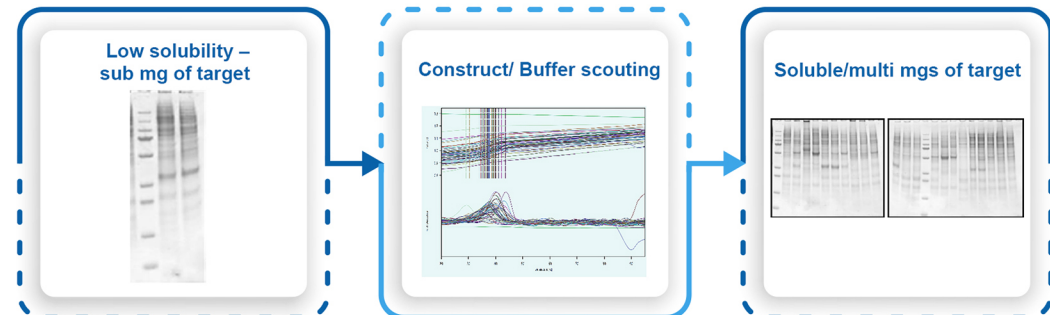


02. Technology-driven optimisation Fluorescence based membrane protein production



In-process application of biophysical techniques enable quality focused results

01. Yield optimisation nanoDSF enabled buffer optimisation



02. Quality evolution DLS enabled buffer optimisation

